

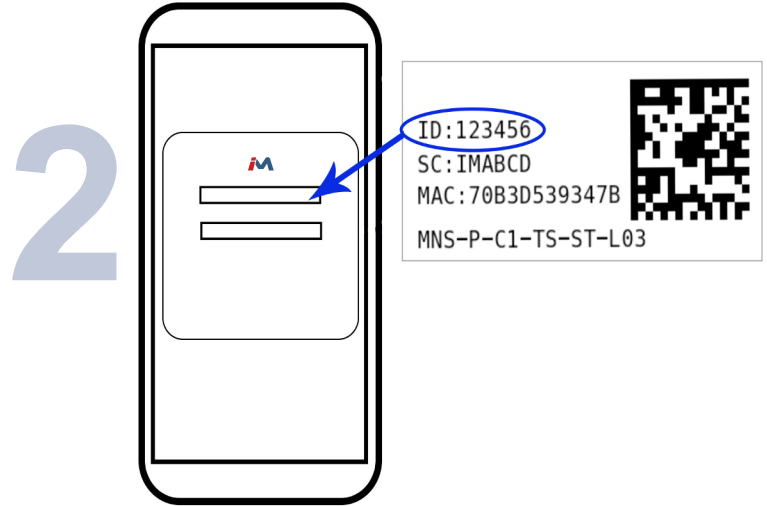


Remote Monitoring for Business

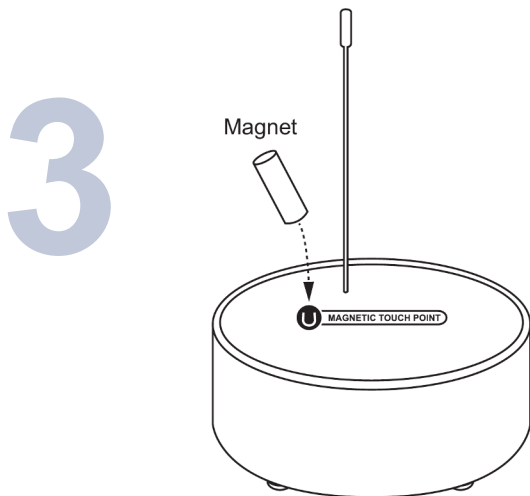
Quick Start Guide - Water Detection Puck



Use the QR code to the right of the phone image above to download the iMonnit app. Alternatively, you can search for "iMonnit" in Google Play or the Apple Store.

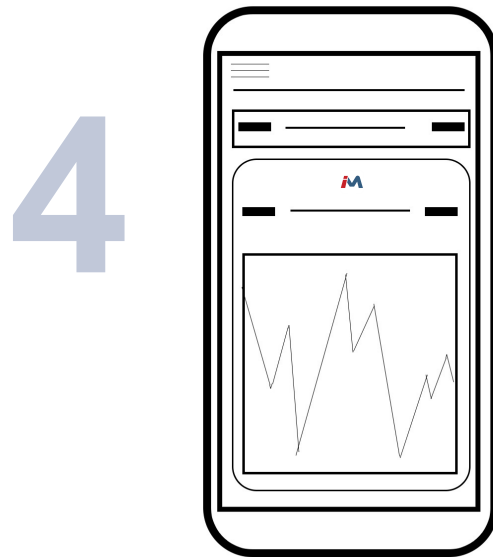


Follow the in-app instructions to add devices to your account.



Top of Water Puck

Use the included magnet to turn on the Water Puck as shown in the illustration. See a diagram of the light sequence on the next page.



iMonnit is the easy way to view your sensor data and customize your sensor settings in the app or online at imonnit.com.

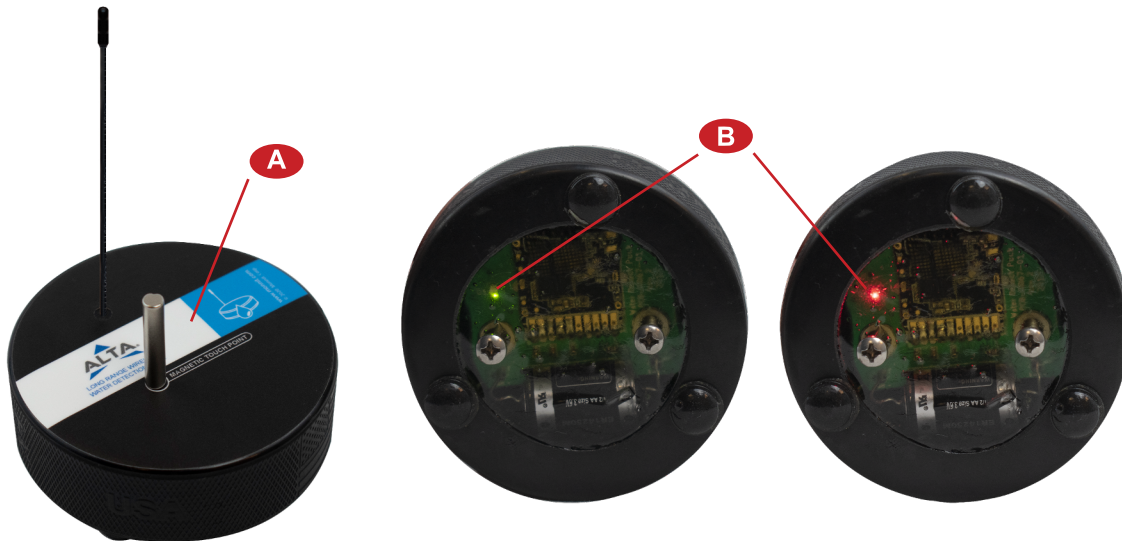
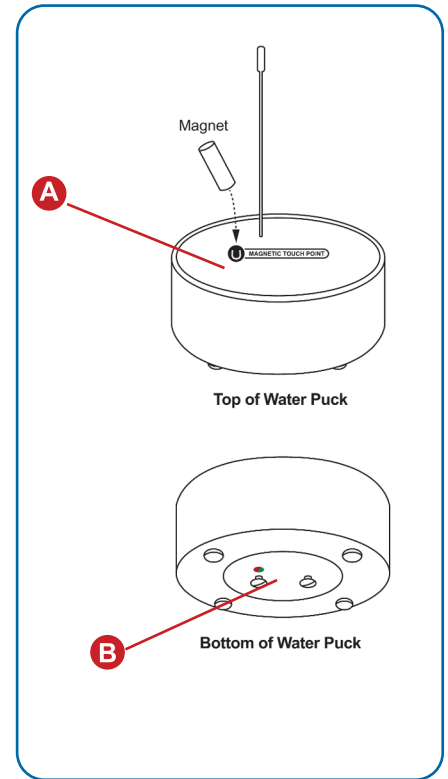
Magnetic Reed Switch and LED Behavior

When your Water Puck Sensor is shipped to you, it comes with a small but powerful magnet. This is used to control the power state of the puck.

Using the magnet will trigger the following reactions from the embedded LED, visible from the underside of the puck itself (B).

The area marked by the label on the top of the water puck indicates the hot spot location for effective use of the magnetic power control (A).

- Bring the magnet in range of (A) and the LED will illuminate indicating the power state.
 - **Solid Green:** Powered ON, connected to gateway.
 - **Flash Red then Solid Green:** Powered ON, not connected to gateway.
 - **Solid Red:** Powered OFF, not connected to gateway.
- If the magnet is still held in place 2 seconds after LED illuminates LED begins flash rapidly.
 - **Green Flashing:** Will turn ON after magnet is removed.
 - **Red Flashing:** Will turn OFF after magnet is removed.
- If the magnet is removed after holding for over two seconds the sensor will change power state.
 - **Single Slow Green Flash:** Turning ON or powered ON.
 - **Single Slow Red Flash:** Turning OFF.



Monnit Corporation

3400 South West Temple • Salt Lake City, UT 84115 • 801-561-5555
www.monnit.com