

iMONNITTM EXPRESS

Quick Start Guide - iMonnit Express 4.0 (PC Software)

1



Visit [Monnit.com](https://www.monnit.com) to download and install the [iMonnit Express](#) software. Launch the iMonnit Express installer and follow the on-screen instructions.

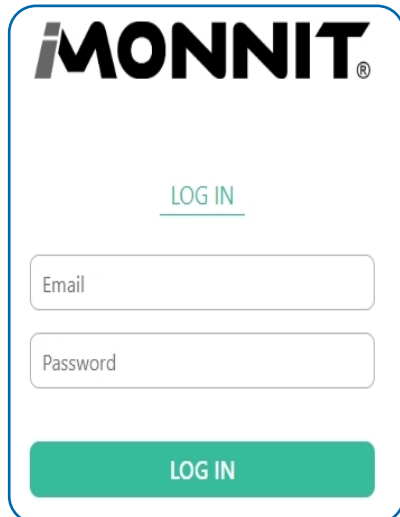
2



Restart your computer.* Launch the iMonnit Express program from your desktop. The program will open in a browser window.

* If you prefer not to reboot your computer, you can locate the service "iMonnit Express" inside your service manager console and start the service manually.

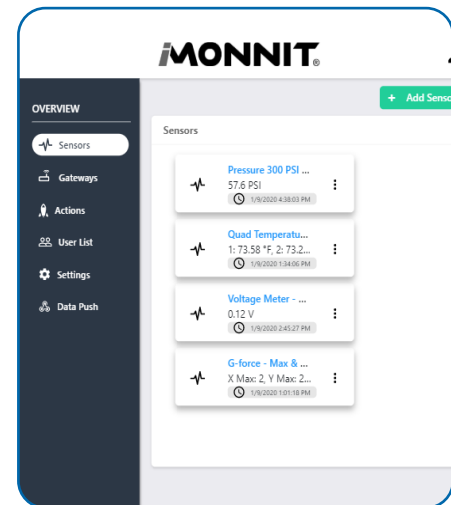
3



Activate the Express software with the code you received when purchasing. Create a username using your email address and a unique password. Re-enter the combination to log into iMonnit Express.

For more detailed instructions, documentation, how-to guides and video demonstrations on using Monnit wireless sensors, wireless gateways and iMonnit software, visit our support page at [monnit.com/support/](https://www.monnit.com/support/).

4



Add sensors and gateways to your iMonnit Express account and adjust their settings.

MONNIT

Monnit Corporation

3400 South West Temple • Salt Lake City, UT 84115 • 801-561-5555
www.monnit.com